

C22S+

2MP Color Medical Display



Diagnostic

2MP Color Medical Display

C22S+ is with 2MP (1600X1200) high resolution, high brightness, high contrast ratio and wide viewing angle, can be applied to various medical image equipment and PACS system.

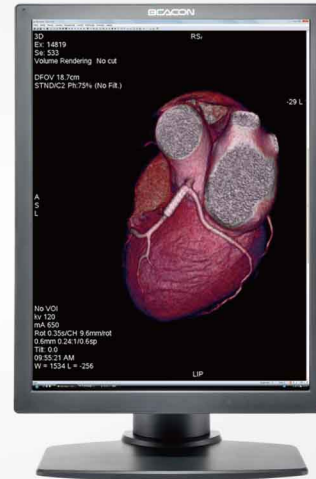
Each monitor is strictly calibrated to compliant with DICOM standard, ensure the accurate display of medical images and details. The built-in backlight stabilization system can ensure the consistence performance in long-term use.

C22S+ is with LED backlight and ultra-thin design.

BEACON

Application Area

- CR/DR
- CT
- MRI
- PET/CT
- X-RAY
- DSA
- DSI
- 3D medical image
- Image fusion
- Nuclear medicine
- CAD



Technical Specification

Model	C22S+
Display size	21.3"
Support color	1.07 Billion
Resolution	1600x1200
Pixel Pitch	0.270 x 0.270mm
Brightness	900cd/m2 Typ.
Contrast	1400:1 Typ.
Angle of view	176° Typ.
Response time	20ms Typ.
Input signal interface	DVI-D: 24 pin DisplayPort: 20 pin VGA: D-Sub 15 pin
Size	369(W)x507~627(H)x235(D)mm
Weight	9.2 kg
Standard Mounting	VESA 100x100mm
Power supply	DC 12V
Power Consumption	60W max
Power Saving	EPA, VESA
MTBF	> 50,000 hours



Built-in multiple display mode



Backlight stabilization system



Ambient light adaptive system(ALAS)



QA software



Compliant with DICOM standard



True color restore