

C24S+



2MP Color Medical Display

C24S+ is with 2MP (1600X1200) high resolution, high brightness, high contrast ratio and wide viewing angle, can be applied to various medical image equipment and PACS system.

Each monitor is strictly calibrated to compliant with DICOM standard, ensure the accurate display of medical images and details. The built-in backlight stabilization system can ensure the consistence performance in long-term use.

C24S+ is with LED backlight, ultra-thin true flat design.

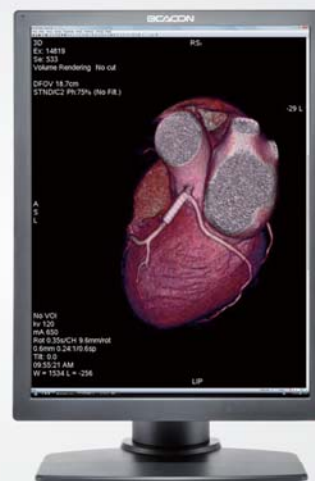
BEACON

C24S+

2MP Color Medical Display

Application Area

- CR/DR
- CT
- MRI
- PET/CT
- X-RAY
- DSA
- DSI
- 3D medical image
- Image fusion
- Nuclear medicine
- CAD



Technical Specification



Built-in multiple display mode



Backlight stabilization system



Ambient light adaptive system(ALAS)



Compliant with DICOM standard



True color restore

Model	C24S+
Display size	21.3 "
Support color	1.07 Billion
Resolution	1600x1200
Pixel Pitch	0.270 x 0.270mm
Brightness	440cd/m2 Typ.
Contrast	1500:1 Typ.
Angle of view	178 ° Typ.
Response time	20ms Typ.
Input signal interface	DVI-D: 24 pin
	DisplayPort: 20 pin
	VGA: D-Sub 15 pin
Size	369(W)x507~627(H)x235(D)mm
Weight	9.2 kg
Standard Mounting	VESA 100x100mm
Power supply	DC 12V
Power Consumption	60W max
Power Saving	EPA, VESA
MTBF	> 50,000 hours

BEACON

Shenzhen Beacon Display Technology Co., Ltd.

Room 201 Incubator Building, CASTD, High-tech

Tel: +86 755 2699 5355

South 1st Street, Nanshan District, Shenzhen 518057,

Fax: +86 755 2699 5755

China

www.beacon-display.cn

All specifications are subjected to change without prior notice.