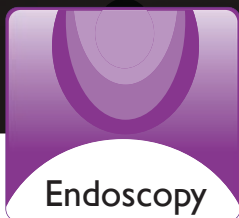
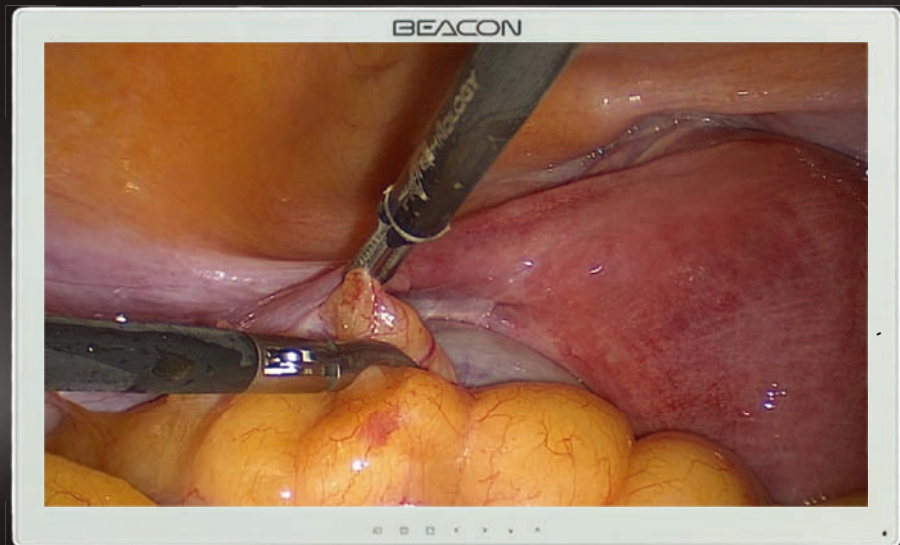


S262P

FHD Surgical Color LCD Display



FHD Surgical Color LCD Display

The endoscope and surgical display can restore medical image truly and accurately. With high brightness, high contrast ratio and wide viewing angle, the image display performance can be ensured during the surgery process, thus can provide liable support for doctors.

The true flat design gives the display high grade protective performance, makes it easy to disinfect and clean. With various signal input and output interfaces, the display can satisfy the requirements of endoscope, operating room and ICU. The standard installation structure makes the display be fully compatible with the operating room.

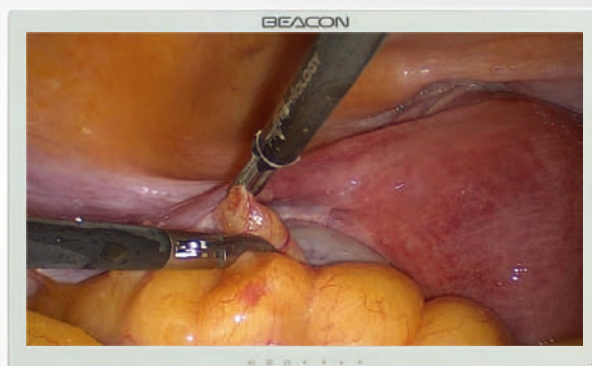
BEACON

S262P

FHD Surgical Color LCD Display

Application Area

- Endoscope
- Operating room
- ICU (Intensive Care Unit)



Technical Specification

Model	S262P
Display size	26"
Support color	1.07 Billion
Resolution	1920 x 1080
Pixel Pitch	0.300 x 0.300mm
Brightness	450 cd/m2 Typ.
Contrast	1400:1 Typ.
Angle of view	178° Typ.
Response time	8ms Typ.
Input signal interface	DVI-D: 24 pin / VGA: D-Sub 15 pin CVBS: BNC / S-VIDEO: DIN4 YPbPr: BNC*3 / RGBS: BNC*4 HD-SDI: BNC / Fiber: FC (optional)
Output signal interface	DVI-D: 24 pin / CVBS: BNC S-VIDEO: DIN4 / YPbPr: BNC*3 RGBS: BNC*4 / HD-SDI: BNC
Size	662(H) × 412(V) × 100(D) mm
Weight	9.2kg
Standard Mounting	VESA 100x100mm
Power supply	DC 24V
Power Consumption	55W max.
Power Saving	EPA, VESA
MTBF	> 50,000 Hours
	Professional protective glass



Backlight stabilization system



Built-in multiple display mode



Professional protective glass



True color restore



Wide viewing angle



Shenzhen Beacon Display Technology Co., Ltd.

12F, Block B1, Nanshan Zhiyuan, No.1001 Xueyuan Road, Tel: +86 755 3398 5118
Nanshan District, Shenzhen, 518055 China Fax: +86 755 2699 5755

www.beacon-display.cn

All specifications are subjected to change without prior notice.